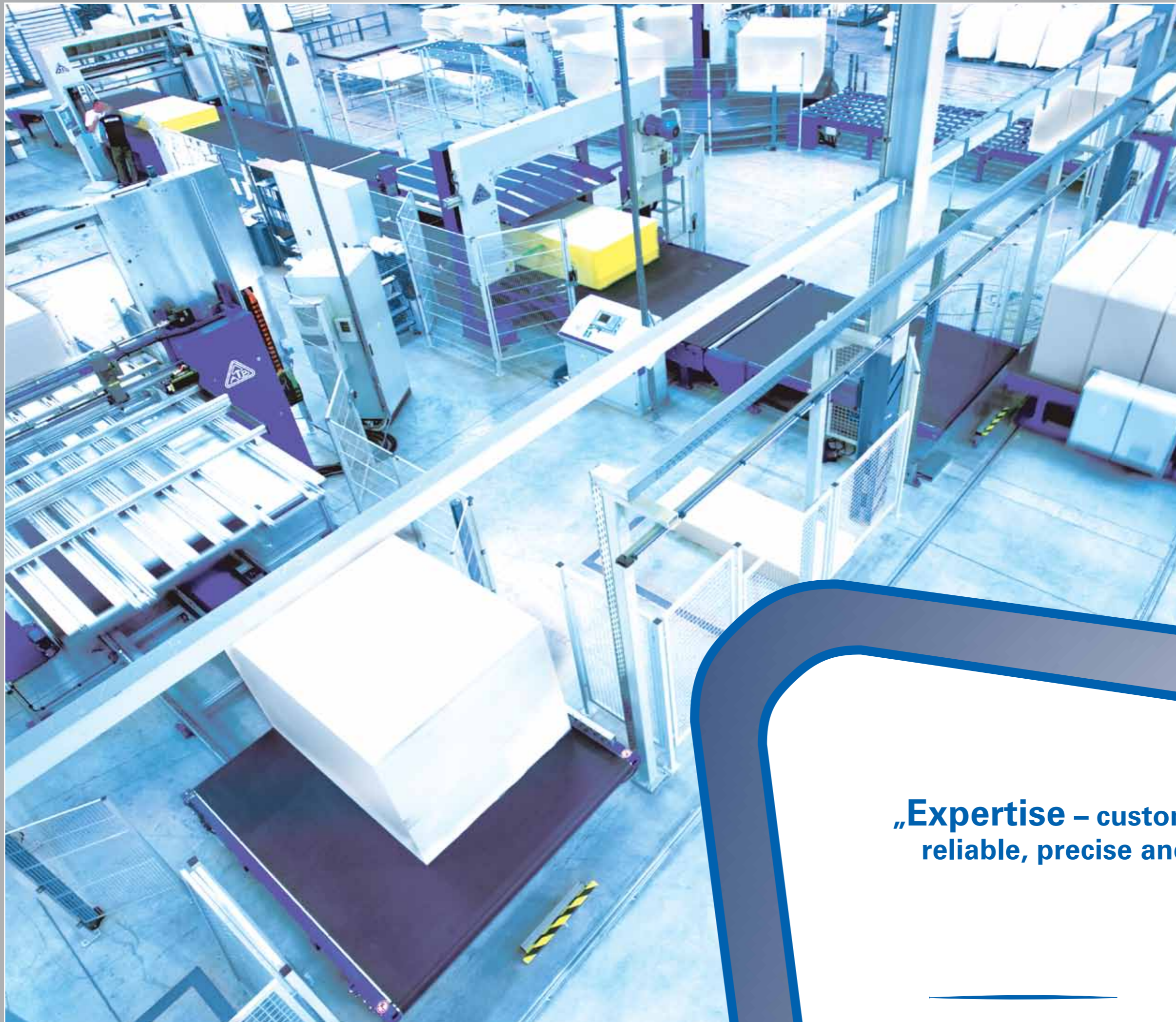


OFS-VW | OFS 221 | HFS 2000

Horizontal contour cutting | Vertical cutting | [Contour cutting - Wire](#) | Profiling | Peeling

BÄUMER



Content

4 - 7	OFS-VW
8 - 11	OFS 221
12 - 15	HFS 2000

**„Expertise – customised solutions:
reliable, precise and economical.“**

OFS-VW

Vertical contour cutting machine

Vertical contour cutting machine with wire for the cutting of any geometrical two-dimensional contour

Application area: Automotive and packaging industry, producers of core material for the automotive sector, wind energy plants, naval engineering, aerospace industry, construction industry

Material: PUR rigid foam, PVC und PET rigid foam, polystyrene, EPS and XPS, special foam for sandwich applications, polyester fleece, glas and mineral wool, laminated materials

Cutting tool: Patented endless high speed cutting wire with diameters of 1-2 mm



Fig.: Knife gap cover



Fig.: Separate belt drive motor



Fig.: Adjustable wire tension



Fig.: OFS-VW Vertical contour cutting machine

- A special wire manufactured in a patented process is used for cutting. This ensures a dust-reduced cutting with minimal loss of material
- Cutting of any form parts and manufacturing of sharp-edged corners due to the all-round cutting effect of the cutting wire
- The cutting speed of the OFS-VW depends on the characteristics of the material and can be infinitely pre-set according to the corresponding foam quality (40 m/min max.)
- Cutting of special materials with adjustable wire speed
- As a standard, the OFS-VW is equipped with an on-board knife gap cover so that even sheet stacks with thin thicknesses can be cut
- Integrated device for connecting the machine to an external extraction unit
- A quick programming at the machine is possible: After the block dimensions have been entered, the control automatically calculates the maximum quantity of the cutting parts
- The current status is permanently shown on the TFT monitor
- Use of WinCAP programming software developed by Bäumert for quick and external generation of material-saving cutting programmes
- Integration in a cutting line is possible

Technical data

OFS-VW

	Standard	Option
Block height:	950 mm	1 300 mm
Block width:	2 200 mm	1 300 mm
Block length:	2 400 mm	3 050 mm
Standard:	<ul style="list-style-type: none"> ✓ Transport conveyor system ✓ Device for a connection to an external extraction unit ✓ Modem ✓ Cooling unit ✓ WinCAP 	
Options:	<ul style="list-style-type: none"> ✓ Loading and unloading conveyors ✓ Charging automatic ✓ Unloading conveyor as palletizer ✓ Cutting dust extraction unit ✓ Infinitely variable wire speed ✓ Nester/Nestpro 	
Maximum cutting speed:	<ul style="list-style-type: none"> ✓ Up to 40 m/min., depending on the material 	

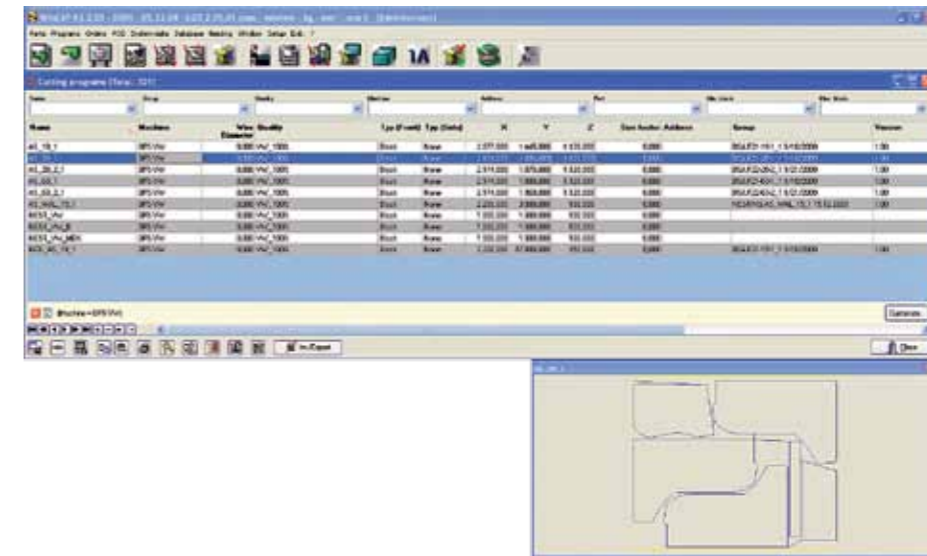
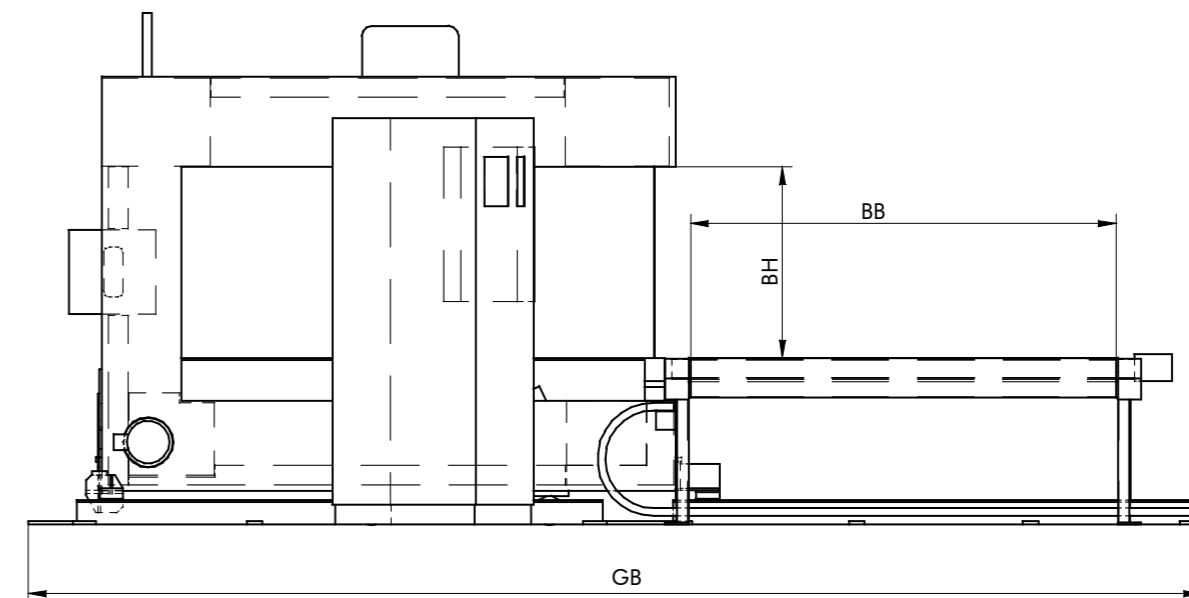
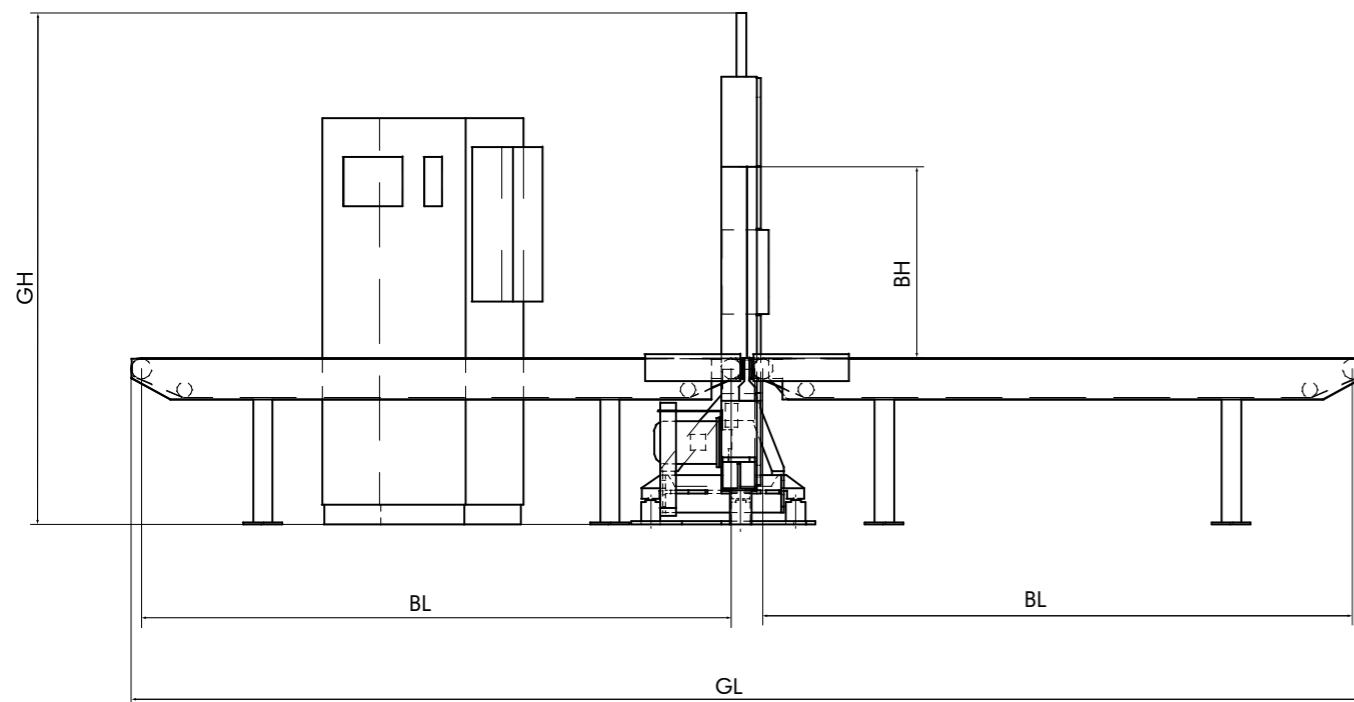


Fig.: Nesting in the software "Nester"



Block height (BH)	Total height (GH)
950 mm	2 640 mm
1 300 mm	2 990 mm

Block width (BB)	Total width (GB)
1 300 mm	4 310 mm
2 200 mm	6 070 mm

Block length (BL)	Total length (GL)
2 400 mm	5 080 mm
3 050 mm	6 380 mm

We have compiled all indications, images and technical information with utmost care. However, we cannot give any guarantee on the correctness. Subject to change.

OFS 221

Horizontal contour cutting machine

Horizontal contour cutting machine with a height-adjustable cutting unit and reversing table for the cutting of harder material by means of a circulating wire

Application area: Automotive industry, upholstery and furniture industry, packaging industry, construction industry, acoustic and heat isolation

Material: PUR rigid and soft foam, PUR rebond foam, polystyrene, PE, rock wool and glass wool, Foamglas®, phenol foam, Basotect®

Cutting tool: Patented endless high speed cutting wire with diameters of 1-2 mm



Fig.: OFS 221 Horizontal contour cutting machine



Fig.: Working table with conveyor belts



Fig.: Pipe shells made from rock wool



Fig.: Reentry side of the cutting wire

- The special wire can cut precise form parts even out of very hard materials due to its all-round cutting effect. It cuts every shape required, even right angles and the smallest radii
- Cutting speeds up to 5 m/min., depending on material and contour
- Intergrated dust extraction unit for the optimal removal of the occurring cutting dust
- The adjustable wire speed (option) allows an even more precise and cleaner cutting of foams of various hardnesses and qualities
- Optional equipment of the working table with transport conveyors for an easier loading and unloading
- Easy maintenance, cleaning and changing of the wire
- Control by means of TFT monitor with keyboard and menu-guided user interface
- The software provides the possibility to record operating data and to transfer these to external programmes
- Use of WinCAP programming software developed by Bäumer for quick and external generation of material-saving cutting programmes



Fig.: Operator panel

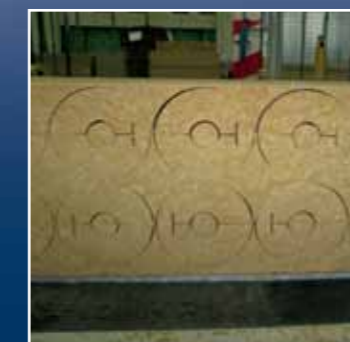


Fig.: Cut parts



Fig.: Exit side of the cutting wire

Technical data

OFS 221

	Standard	Option
Block height:	1 300 mm	1 500 mm
Block width:	2 200 mm	1 600 mm, 2 500 mm
Block length:	2 200 mm	2 700 mm, 3 200 mm
Standard:	<ul style="list-style-type: none"> ✓ Smooth working table ✓ Dust extraction unit ✓ Cooling unit ✓ WinCAP ✓ Modem ✓ Wire speed 80 m/s 	
Options:	<ul style="list-style-type: none"> ✓ Manual turntable without vacuum unit ✓ On-board vacuum in connection with a perforated table sheet ✓ Working table with 4 conveyor belts ✓ Infinitely variable wire speed 40 - 90 m/s ✓ Charging automatic ✓ Nester/Nestpro ✓ Loading and unloading conveyor 	
Maximum cutting speed:	✓ 5 m/min., depending on the material	

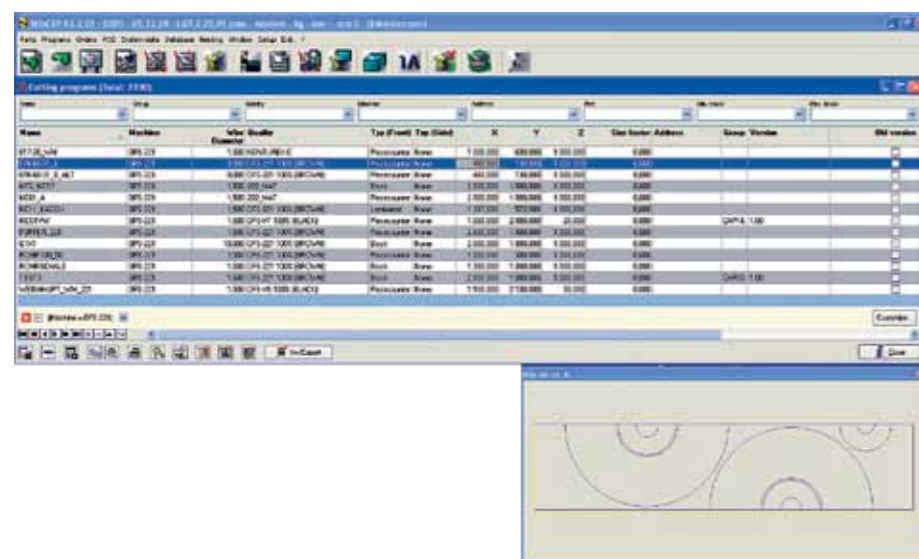
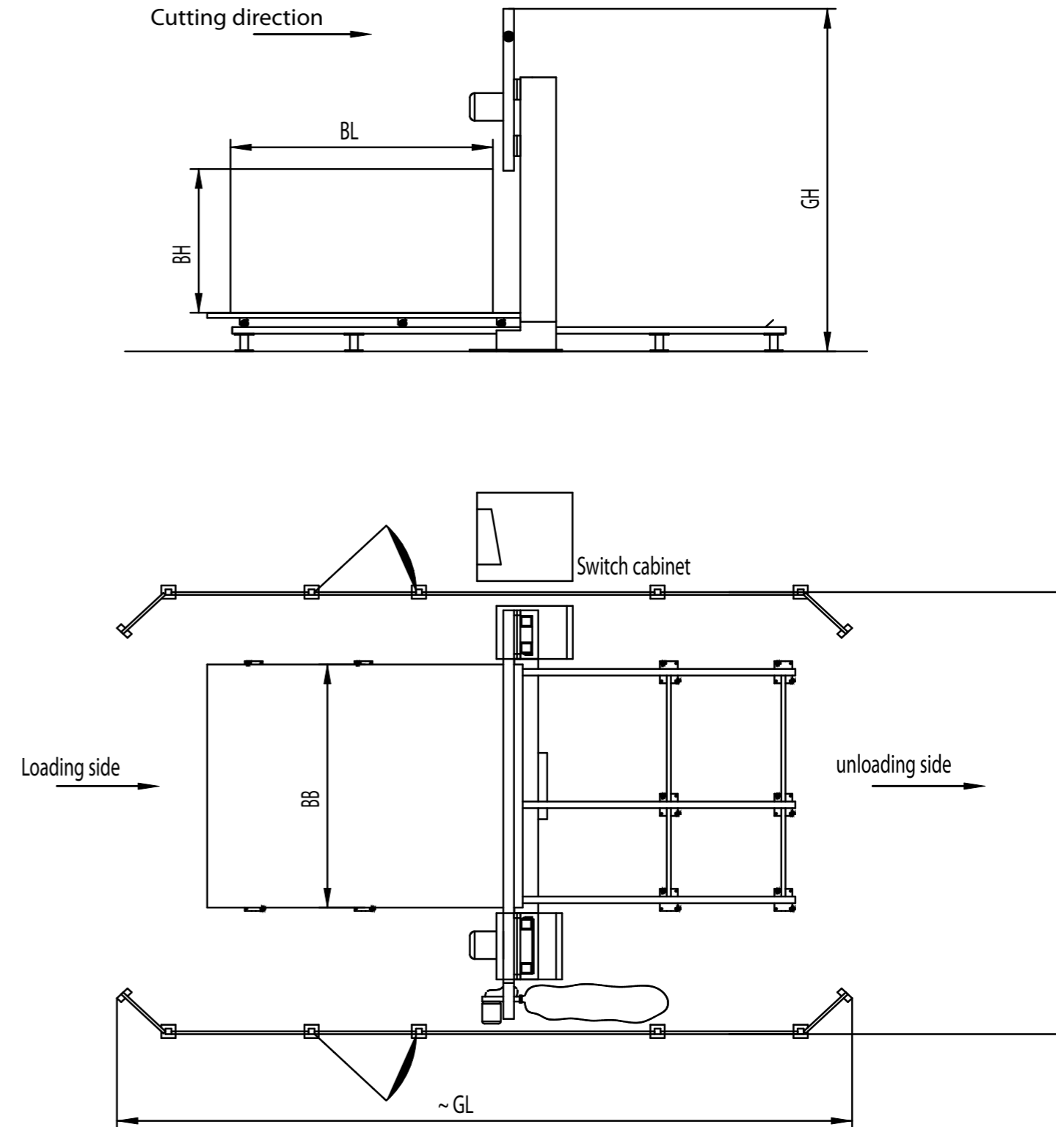


Fig.: Programming half pipe shells in WinCAP



Block height (BH)	Total height (GH)
1 300 mm	3 100 mm
1 500 mm	3 500 mm

Block length (BL)	Total length (GL)
2 200 mm	6 100 mm
2 700 mm	7 100 mm
3 200 mm	8 100 mm

Block width (BB)	Total width (GB)
1 600 mm	4 000 mm
2 200 mm	4 650 mm
2 500 mm	4 950 mm

We have compiled all indications, images and technical information with utmost care. However, we cannot give any guarantee on the correctness. Subject to change.

HFS 2000

Horizontal contour cutting machine

Horizontal contour cutting machine with stationary cutting unit and reversing table for the cutting of harder materials by means of a circulating wire

Application area: Automotive industry, upholstery and furniture industry, packaging industry, construction industry, acoustic and heat isolation

Material: PUR rigid and soft foam, PUR rebond foam, polystyrene, PE, rock wool and glass wool, Foamglas®, phenol foam, Basotect®

Cutting tool: Patented endless high speed cutting wire with diameters of 1-2 mm



Fig.: Exit side of the cutting wire



Fig.: Reinforced grinding dust extraction unit



Fig.: Reentry side of the cutting wire

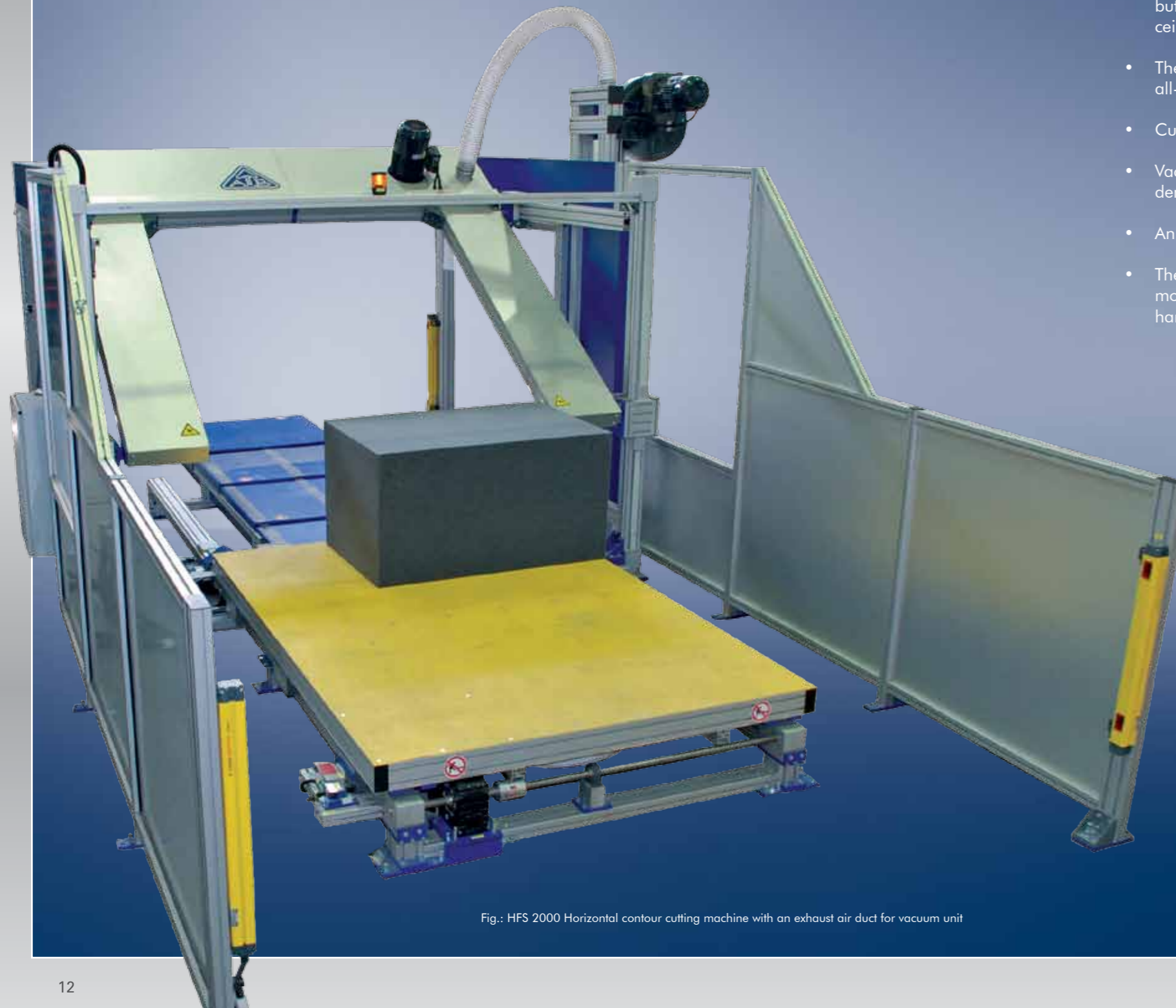


Fig.: HFS 2000 Horizontal contour cutting machine with an exhaust air duct for vacuum unit

- Due to the special design of the cutting unit, which does not move in a linear way like the OFS 221, but turns around the upper cross bar, the machine can be installed in production halls with limited ceiling height
- The special wire (\varnothing 1-2 mm) can cut precise form parts even out of very hard materials due to its all-round cutting effect. It cuts every shape required, even right angles and the smallest radii
- Cutting speeds up to 5 m/min., depending on material and contour
- Vacuum unit serves for a better fixation of foam blocks; particularly with materials with a light gross density
- An intergrated dust extraction unit for the optimal removal of the occurring cutting dust
- The adjustable wire speed (option) allows an even more precise and cleaner cutting of foams of various hardnesses and qualities
 - Modifications of the cutting programmes can be directly realised at the machine during the cutting process
 - Use of WinCAP programming software developed by Bäumer for quick and external generation of material-saving cutting programmes
 - Possibility of an external programming station for the automatic generation of cutting programmes



Fig.: HFS 2000 Operator panel

Technical data

HFS 2000

	Standard	Option
Block height:	1 300 mm	1 500 mm
Block width:	1 600 mm	2 200 mm
Block length:	2 200 mm	2 700 mm, 3 200 mm
Standard:	<ul style="list-style-type: none"> ✓ WinCAP ✓ Grinding dust extraction unit ✓ Vacuum 	
Options:	<ul style="list-style-type: none"> ✓ Infinitely variable wire speed (40-80 m/s) ✓ Cooling unit ✓ Digitizing board ✓ Manual turntable ✓ Modem ✓ Exhaust air duct for vacuum unit ✓ Separate programming station 	
Maximum cutting speed:	✓ 5 m/min., depending on the material	

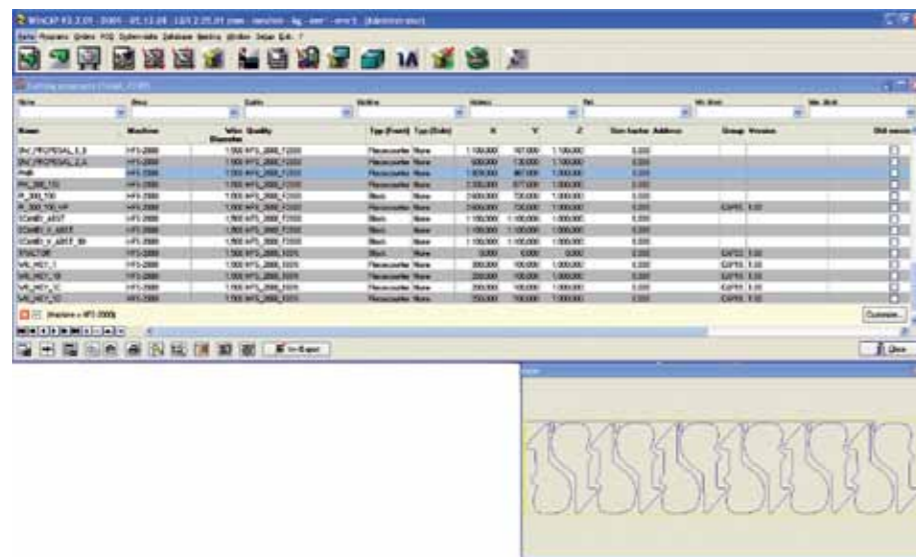
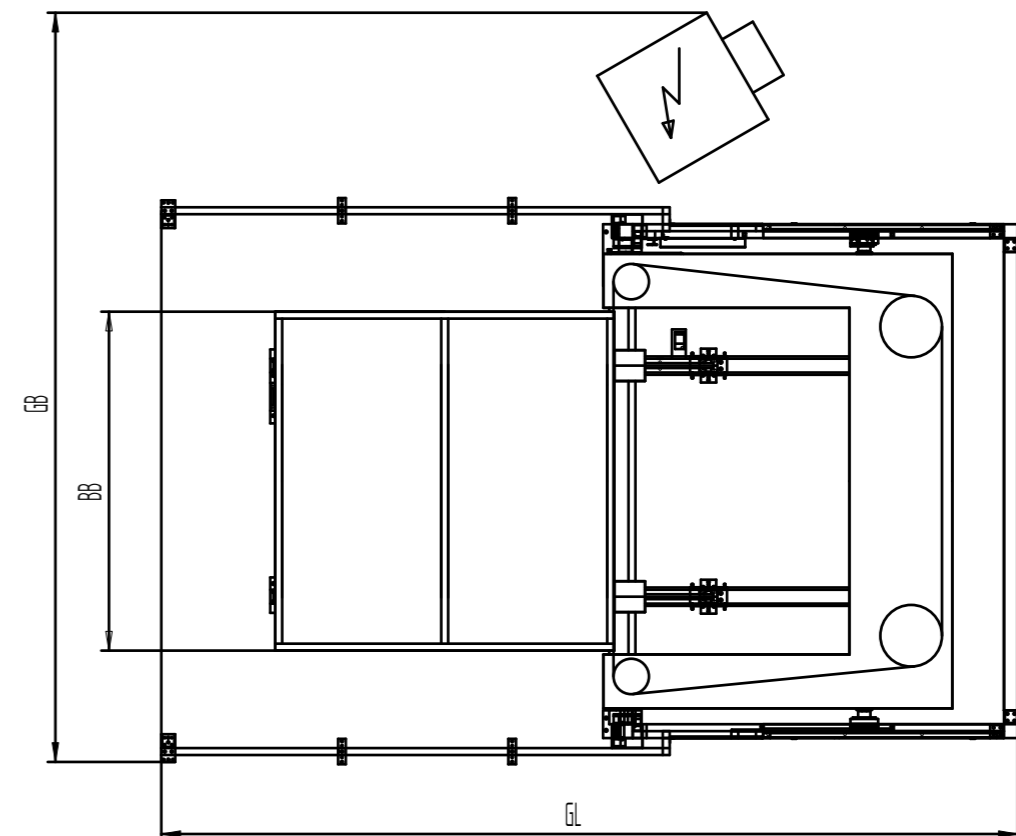
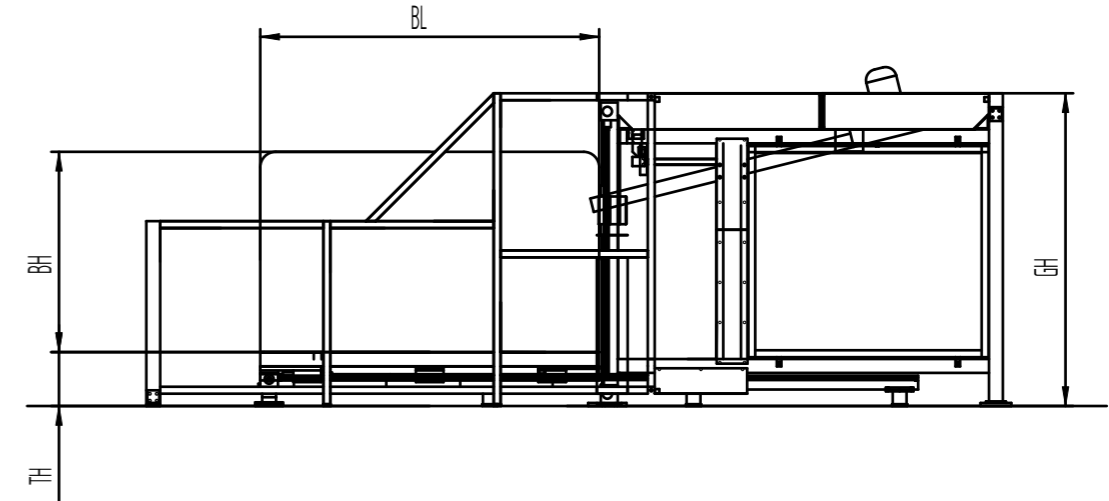


Fig.: Manual nesting in WinCAP



Block width (BB)	Total width (GB)
1 600 mm	4 300 mm
2 200 mm	4 900 mm

Block height (BH)	Table height (TH)	Total height (GH)
1 300 mm	350 mm	2 300 mm
1 500 mm	350 mm	2 500 mm

Block length (BL)	Total length (GL)
2 200 mm	5 600 mm
2 700 mm	6 500 mm
3 200 mm	7 500 mm

We have compiled all indications, images and technical information with utmost care. However, we cannot give any guarantee on the correctness. Subject to change.

... because innovation is progress!

BÄUMER

Albrecht Bäumer GmbH & Co. KG
 Spezialmaschinenfabrik
 Asdorfer Straße 96-106
 57258 Freudenberg
 Germany
 Phone: +49 2734 289-0
 Fax: +49 2734 289-289
 Internet: www.baeumer.de
 e-mail: info@baeumer.de

Bäumer of America Inc.
 425 Main Road
 Towaco, NJ 07082
 USA
 Phone: +1 973 263 1569
 Fax: +1 973 299 8587
 Internet: www.baumerofamerica.com
 e-mail: info@baumerofamerica.com

Bäumer of Japan Inc.
 German Industry Park 458
 No. 1 - 18 - 2 Hakusan · Midoriku
 226-0006 Yokohama
 Japan
 Phone: +81 459 3177 33
 Fax: +81 459 3177 90
 Internet: www.baeumer.co.jp
 e-mail: info@baeumer.co.jp

Bäumer of Shanghai
 Machine Trading Co., Ltd.
 Rm. 2714, Bldg. 2
 58 Xinjian Road (E)
 Shanghai, 201199, P.R. China
 Phone: +86 21 22816421
 Fax: +86 21 34130660
 Internet: www.baeumer.asia
 e-mail: info@baeumer.asia